

XIYUE
ALKALINE WATER
SYSTEM

XIYUE碱性水系统

by Night Stars Pte Ltd

Technical specifications 技术规格



Product Model 产品型号	Alkaline Water System 碱性水系统
Function 功能	<ul style="list-style-type: none">- Aids in Weight Loss 帮助减肥- Better Hydration 更好的保湿- Balances Body pH 平衡人体酸碱度- Detoxifies Body 让身体排毒- Helps recover easily from Acidosis 帮助从酸中毒里轻松恢复- More Oxygenation 提供身体更多氧气
Size 体积	32.3cm(length) x 9.4cm(width) x 33.2cm(height) 32.3厘米 (长) x 9.4厘米 (宽) x 33.2厘米 (高)
Machine Weight 机体重量	2.75kg 2.75公斤

Why Drinking Water is Essential for Body Contouring

At Elite Body Contouring, we emphasize the importance of water for both effective treatments and overall health. Life can be busy, making self-care challenging, but prioritizing hydration is crucial. While diet and nutrients get attention, water is often overlooked. Our bodies are 60% water and even our blood is 90% water, highlighting the need for regular hydration.

Benefits of Drinking Water

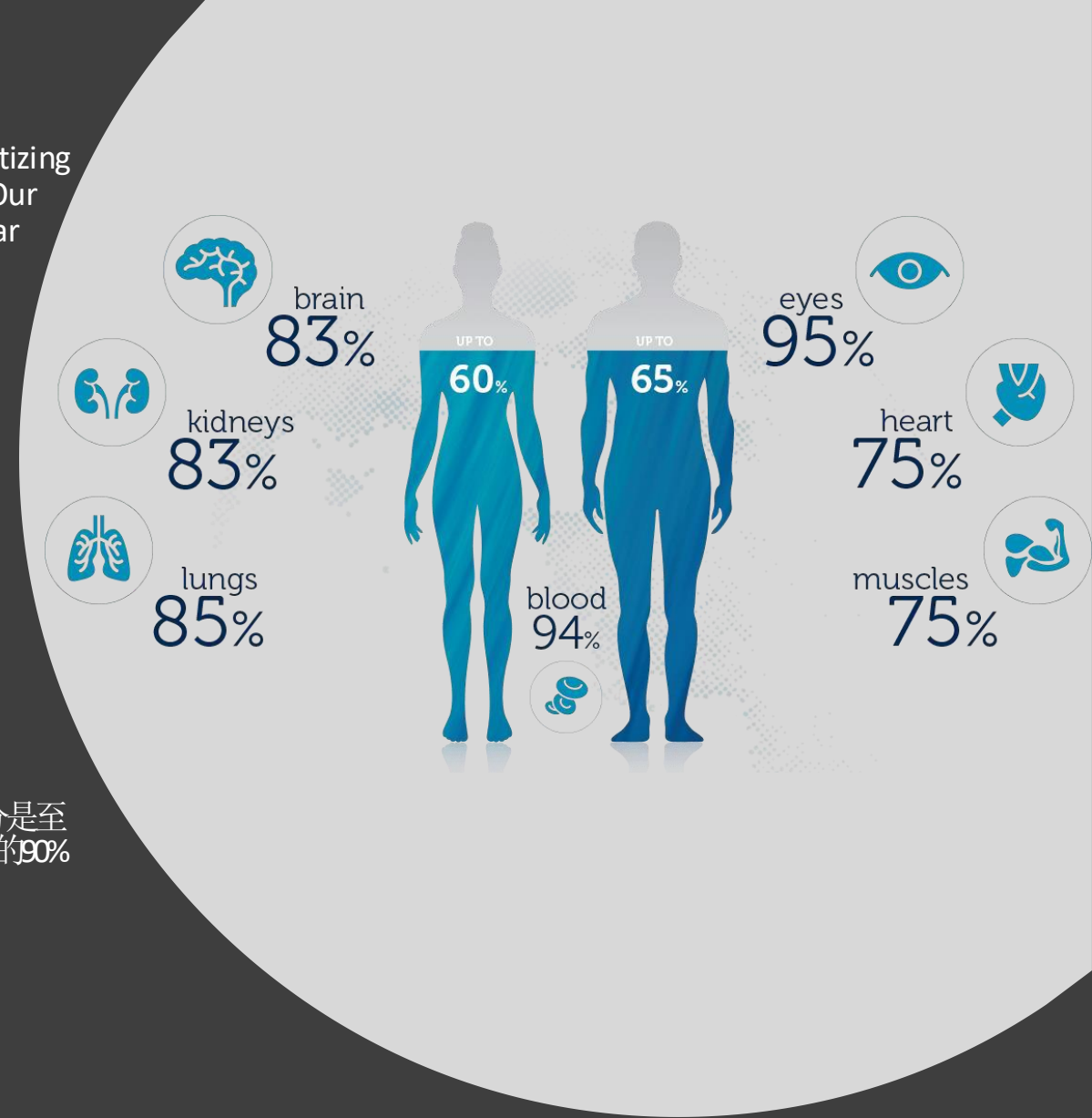
- Supports digestion and gut health
- Improves circulation and oxygenation
- Aids cell and organ function
- Enhances vitamin and mineral absorption
- Regulates body temperature
- Boosts muscle performance
- Flushes out toxins
- Enhances skin health
- Increases metabolism

为什么喝水对身体塑形很重要

我们强调水对有效治疗和整体健康的重要性。生活繁忙，自我护理可能变得困难，但保持水分是至关重要的。尽管饮食和营养经常被关注，水却常被忽视。我们的身体有60%是水分，甚至血液的90%是水，这突显了保持水分的重要性。

喝水的好处

- 支持消化和肠道健康
- 改善循环和氧气供应
- 帮助细胞和器官功能
- 增强维生素和矿物质吸收
- 调节体温
- 提升肌肉表现
- 排出毒素
- 改善皮肤健康
- 增加新陈代谢



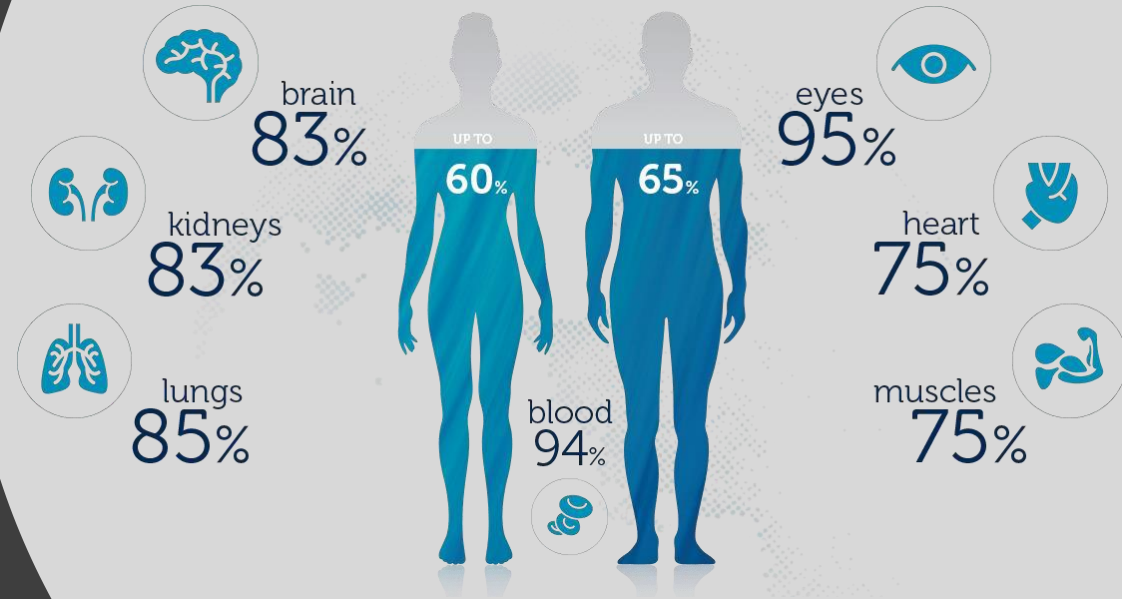
The functions of water in human body are vivacious.

- Water plays many essential roles in the human body, including transporting nutrients and oxygen to cells, protecting vital organs, aiding metabolism, regulating temperature, and cushioning joints. However, do you know where your drinking water comes from? It often originates from municipal sources or unprotected sources like rivers, streams, and poorly built wells, which can be contaminated with bacteria, nitrates, and pesticides.
- While tap water is treated to remove pollutants, higher levels of chlorine and other additives are now used. Unfortunately, tap water quality has declined in recent years, with noticeable chlorine taste and smell, leading many to choose water ionizers for home purification.

水在人体中的功能是活跃的

水在人体中发挥着多种重要作用，包括将营养和氧气运输到细胞中、保护重要器官、帮助新陈代谢、调节体温以及缓冲关节。但你知道你的饮用水来自哪里吗？它通常来自市政水源或未受保护的水源，例如河流、小溪和结构不良的水井，这些水源可能被细菌、硝酸盐和杀虫剂等污染。

- 虽然自来水经过处理以去除污染物，但如今使用了更多的氯和其他添加剂。不幸的是，近年来自来水质量下降，氯的味道和气味明显，因此许多人选择水电离子器进行家庭水净化。



What is Alkaline Water?

- Alkaline water advocates say it reduces body acidity. Many believe that our common diet causes low-level acidosis, leading to issues like bone loss, metabolic, and hormonal problems.
- Human blood pH is around 7.4, slightly alkaline, and it's crucial to maintain it within a safe range, as even slight deviations can pose health risks. Different body organs have varying pH levels.
- Alkaline water, with a pH of 7.2–9, helps balance the body's acidity from high-acid diets, stress, and environmental toxins. A balanced pH supports overall health, as alkalinity is the natural state of a healthy person.

什么是碱性水？

碱性水的倡导者认为它可以降低身体的酸性。许多人认为，常见饮食会导致低水平的酸中毒，进而引发骨质流失、代谢和激素问题。

- 人体血液的pH值约为7.4，略偏碱性，保持在安全范围内至关重要，因为即使是微小的偏差也可能带来健康风险。不同的身体器官pH值各不相同。
- pH值在7.2到9之间的碱性水有助于平衡因高酸性饮食、压力和环境毒素造成的身体酸性。平衡的pH值有助于整体健康，因为碱性是健康人的自然状态。



The Importance of Drinking Alkaline Water.

- **Benefits of Drinking Alkaline Water**
 - - Better hydration, immune support, and antioxidant effect
 - - Balances body pH, reducing acidity from diet and stress
 - - Aids in eliminating toxins, supports weight loss, and improves skin and hair
 - - Purifies body, wards off allergies, enhances focus, and is beneficial for gardening
- **Improving Body pH**
 - Alkaline water (pH 7.2–9) helps balance acidity caused by diet, stress, and toxins, creating a healthy, disease-resistant environment.
- **Eliminating Toxins**
 - Alkaline water removes daily acidic waste, environmental toxins, and enhances nutrient absorption, fighting free radicals and flushing toxins efficiently.

饮用碱性水的重要性

- **饮用碱性水的好处**
 - - 提高水分补充，增强免疫力，具有抗氧化作用
 - - 平衡体内酸碱度，减少饮食和压力带来的酸性
 - - 帮助排毒，支持减肥，改善皮肤和头发健康
 - - 净化身体，预防过敏，增强专注力，对园艺有益
- **改善体内酸碱平衡**
 - 碱性水（pH值7.2–9）有助于平衡因饮食、压力和毒素造成的酸性，创造一个健康、抗病的环境。
- **排除毒素**
 - 碱性水能够清除日常酸性废物和环境毒素，增强营养吸收，对抗自由基，帮助细胞和组织有效排毒。



Why we need to drink alkaline water?

- **Better Hydration**
- Alkaline ionized water hydrates the body more effectively than regular water, as it forms micro-clusters that are easily absorbed by cells, allowing faster distribution of minerals and vitamins.
- **Boosts Immune System**
- Alkaline water enhances immunity, helping the body fight diseases and slow aging. Its antioxidants protect against osteoporosis, arthritis, and other degenerative conditions.
- **Improves Circulation**
- Alkaline water, rich in sodium, supports healthy blood circulation, which regulates body fluids, supplies oxygen, and promotes cell growth and healthy skin.

为什么我们需要喝碱性水？

- **更好的水分补充**
- 碱性电离水比普通水更有效地为身体补充水分，它形成的微簇更易被细胞吸收，从而更快速地输送矿物质和维生素。
- **增强免疫系统***
- 碱性水可增强免疫力，帮助身体抗击疾病并减缓衰老。它的抗氧化剂可以预防骨质疏松、关节炎和其他退行性疾病。
- **改善循环**
- 富含钠的碱性水有助于维持健康的血液循环，调节体液、提供氧气，并促进细胞生长和健康的皮肤。



Why we need to drink alkaline water?

Drinking alkaline water supports heart health and nerve function. The magnesium in alkaline water helps the heart pump blood effectively through cells, while potassium and sodium contribute to regulating blood pressure and relaxing heart muscles, reducing risks of heart attack and stroke. Consuming sodium-rich foods, like sea salt, alongside alkaline water can further support healthy blood pressure and cholesterol levels. Conversely, a lack of sodium can lead to thyroid issues and low blood pressure.

为什么我们需要喝碱性水？

饮用碱性水有助于心脏健康和神经功能。碱性水中的镁有助于心脏有效地将血液泵入细胞，而钾和钠则有助于调节血压并放松心脏周围的肌肉，从而降低心脏病发作和中风的风险。与碱性水一起食用富含钠的食物（如海盐）还能进一步支持健康的血压和胆固醇水平。相反，缺乏钠可能会导致甲状腺问题和低血压。



Why we need to drink alkaline water?

- **Acts as an Antioxidant and Aids Digestion**
- Alkaline water contains potassium, which aids digestion and acts as an antioxidant. A higher pH of alkaline water promotes a healthy gut, while low potassium levels can lead to health issues by damaging nutrients and increasing free radicals. Alkaline water helps prevent constipation, bloating, and abdominal pain by neutralizing free radicals and improving nutrient absorption.
- **Acts as a Detoxifier**
- Alkaline water also acts as a detoxifier, removing toxins from the body accumulated from the environment, food, and drugs. It neutralizes acids and flushes out waste from cells, helping keep your body toxin-free.
- **Hydrates the Body**
- Alkaline water is easily absorbed at the cellular level, providing hydration and boosting energy. It helps maintain water balance, which is crucial as the body loses water through sweating and urination. Drinking enough water, especially alkaline water, prevents dehydration and promotes overall health.

为什么我们需要喝碱性水

作为抗氧化剂并有助于消化

- 碱性水含有钾，有助于消化并充当抗氧化剂。碱性水的较高pH值有助于维持健康的肠道，而低钾水平可能通过损害营养物质和增加自由基导致健康问题。碱性水通过中和自由基并改善营养吸收，有助于预防便秘、腹胀和腹痛。

作为排毒剂

- 碱性水还充当排毒剂，清除身体内来自环境、食物和药物积累的毒素。它中和酸性并将废物从细胞中排出，帮助保持身体无毒。

滋润身体

- 碱性水容易在细胞层面被吸收，提供水分并增强能量。它有助于保持水分平衡，这对维持身体正常功能至关重要，因为身体通过出汗和排尿失去水分。饮用足够的水，尤其是碱性水，可以防止脱水并促进整体健康。



TEST REPORT

(This Report is issued subject to the terms & conditions set out below)



SetSCO Services Pte Ltd
531 Bukit Batok Street 23
Singapore 659547
Tel : (65) 6566 7777
Fax: (65) 6566 7718
www.setsco.com
Business Reg No: 196900269D

Your Ref :

Date : 24/05/2023

Our Ref : EN8500263686/LWW-R

Page 1 of 1

Subject : Analysis of water sample submitted by **Night Stars Pte Ltd** on 18/05/2023 and testing commenced on 18/05/2023.

Tested For : **Night Stars Pte Ltd**
12 Woodlands Close
#08-27 Primz Bizhub
Singapore 737854
Attn : Ms Prisilla

Sample Reference : One (01) water sample was received.

Results :

Test Parameters	Units	Test Methods	Sample	Environmental Public Health (Quality of Piped Drinking Water) Regulations 2019	WHO 2022 GV (4th Edition, 1st and 2 nd Addendum)
Total <i>E.coli</i>	cfu/100mL	APHA : Pt 9222H	<1 [†]	<1	<1
Turbidity	NTU	APHA : Pt 2130B	3.4	5	-
Nitrite as NO ₂ -N	mg/L	APHA : Pt 4500-NO ₃ (I)	0.13	0.9	0.9
Total Chlorine as Cl ₂	mg/L	Lovibond Test Kit	0.6	5	5
Cadmium as Cd	mg/L	APHA : Pt 3120B	<0.0012 [†]	0.003	0.003
Mercury as Hg	mg/L	APHA : Pt 3112B	<0.0001 [†]	0.006	0.006
Lead as Pb	mg/L	APHA : Pt 3125B	<0.01 [†]	0.01	0.01
Chromium as Cr	mg/L	APHA : Pt 3120B	<0.003 [†]	0.05	0.05
Magnesium as Mg	mg/L	APHA : Pt 3120B	0.91	-	-
Calcium as Ca	mg/L	APHA : Pt 3120B	14.7	-	-
pH value at 22.2°C	-	APHA : Pt 4500-H* (B)	7.9	6.5 - 9.5	-
Fluoride as F ⁻	mg/L	APHA : Pt 4500-F (C)	<0.5 [†]	0.7	1.5

Remarks:

1. APHA is a Standard Method for the Determination of Water and Waste Water (APHA 23rd Edition : 2017).
2. The tested result applies only to the sample as received by the laboratory.
3. † = Not Detectable (The reported values are less than (<) the detection limits of the test methods).
4. Based solely on the parameters tested, the water sample passed WHO Guideline (2022).
5. Based solely on the parameters tested, the water sample passed EPH Guideline (2019).


MARIVIE VIANA GAPUD
SENIOR CHEMIST


LEE WEI WAH
SENIOR MANAGER

BIOLOGICAL AND CHEMICAL TECHNOLOGY DIVISION

Terms & Conditions:

- (1) The Report is prepared for the sole use of the Client and is prepared based upon the item submitted, the services required by the Client and the conditions under which the Services are performed by SETSCO. The Report is not intended to be representative of similar or equivalent Services on similar or equivalent items. The Report does not constitute an endorsement by SETSCO of the item.
- (2) SETSCO agrees to use reasonable diligence in the performance of the Services but no warranties are given and none may be implied directly or indirectly relating to the Services, the Report or the facilities of SETSCO.
- (3) SETSCO shall under no circumstances be liable to the Client or its agents, servants or representatives, in contract, tort (including negligence or breach of statutory duty) or otherwise for any direct or indirect loss or damage suffered by the Client, its agents, servants or representative howsoever arising or whether connected with the Services provided by SETSCO herein.
- (4) The Report may not be used in any publicity material without the written consent of SETSCO.
- (5) The Report may not be reproduced in part or in full unless approval in writing has been given by SETSCO.



Escherichia coli (E. coli)

大肠杆菌

In some people, particularly children under 5 years of age and the elderly, the infection can also cause a complication called hemolytic uremic syndrome, in which the red blood cells are destroyed and the kidneys fail.

Preterm children, especially within 30 days after birth, newborns, susceptible to E. coli meningitis.

在一定条件下可引起肠道外感染。多为内源性感染，以泌尿系感染为主，如尿道炎、膀胱炎、肾盂肾炎。也可引起腹膜炎、胆囊炎、阑尾炎等。婴儿、年老体弱、慢性消耗性疾病、大面积烧伤患者，大肠杆菌可侵入血流，引起败血症

早产儿，尤其是生后30天内的新生儿，易患大肠杆菌性脑膜炎。



<h1>Turbidity</h1>	<p>水质浊度</p>	<p>Turbidity is an important indicator of the amount of suspended sediment in water, which can have many negative effects on aquatic life.</p> <p>The suspended sediments that cause turbidity can block light to aquatic plants, smother aquatic organisms, and carry contaminants and pathogens, such as lead, mercury, and bacteria.</p>	<p>浊度是水中悬浮物含量的重要指标，对水生生物有很大的负面印象。</p> <p>引起浊度的悬浮沉积物可以阻挡水生植物所需的阳光，导致水生生物窒息，并携带污染物和病原体，如铅，汞和细菌</p>
--------------------	-------------	---	--



Nitrite, NO₂

亚硝酸盐

Nitrites in the blood cause changes in haemoglobin, or the molecules that help move oxygen in the body. Nitrates can make it so that less oxygen is available for the body to function properly.

For infants who are bottle-fed, nitrate poisoning can happen when nitrate contaminated drinking water is used to dilute formula. Because the gastrointestinal system of infants is still developing after birth, they are at higher risk for serious health effects resulting from nitrate exposure.

A pregnant woman and her fetus might be more sensitive to toxicity from nitrites or nitrates at or near the 30th week of pregnancy.

亚硝酸盐能使血液中正常携氧的低铁血红蛋白氧化成高铁血红蛋白，因而失去携氧能力而引起组织缺氧。

6个月以内的婴儿特别敏感及容易患“高铁血红蛋白症”，症状为缺氧，出现紫绀，甚至死亡。

透过胎盘进入胎儿体内，对胎儿有致畸作用。



<h2>Chlorine, Cl₂</h2>	氯	<p>According to the U.S Council Of Environment Quality, "Cancer risk among people drinking chlorinated water is 93% higher than among those whose water does not contain chlorine."</p> <p>Chlorine is a disinfectant used for disinfection of tap water. Long-term exposure to chlorine leads to the production of free radicals within the body. Free radicals are carcinogenic, and cause tremendous damage to our cells.</p>	<p>根据美国环境质量委员会的说法, "饮用氯化水的人的患癌症风险比饮用不含氯的水的人高93%"。</p> <p>氯是一种消毒剂, 用于自来水进行消毒杀菌。但是氯对细菌细胞杀灭效果好, 同样, 对其他生物体细胞、人体细胞也有严重影响。长期和过量接触氯导致体内自由基的产生。自由基是致癌的, 对我们的细胞造成巨大的损害。</p>
-----------------------------------	---	--	---



Cadmium, Cd

镉

Negative effects of cadmium on the body are numerous and can impact nearly all systems in the body, including cardiovascular, reproductive, the kidneys, eyes, and even the brain. It will affect blood pressure, prostate function and testosterone levels, bone damage, renal and dopaminergic systems in children.

The International Agency for Research on Cancer (IARC) classifies cadmium as a human carcinogen and causes serious health damage to humans; the US Department of Toxic and Disease Registry (ATSDR) certifies cadmium as the seventh harm to human health substances.

镉为有毒元素，其化合物毒性更大。镉会损害肾小管和肾小球，导致蛋白尿、氨基酸尿和糖尿，甚至引发软骨病，骨骼疏松萎缩变形等。镉从消化道进入人体，则会出现呕吐胃脘痉挛腹痛腹瀉等症狀，甚至可因肝肾綜合症死亡。

世界卫生组织将镉列为重点研究的食品污染物；国际癌症研究机构(IARC)将镉归类为人类致癌物，会对人类造成严重的健康损害；美国毒物和疾病登记署(ATSDR)将镉列为第7位危害人体健康的物质。



Mercury, Hg

汞(水銀)

Mercury has no value to the human body and is best thought of as poison. Acute exposure to mercury vapor can produce serious effects on the nervous system including psychotic reactions, hallucinations, suicidal tendencies and delirium. Continued exposure can produce violent muscular spasms and even death. When it enters the body, it is stored in the kidneys, blood, spleen, brain, liver, bones and fatty tissues.

It's bad stuff for everyone and this is doubly true for pregnant or nursing women. Breast milk can become contaminated and in utero exposure to mercury has been attributed to an increase in neural tube defects.

在污染嚴重的地區，水銀可能會隨雨水落下。水銀中毒分急性和慢性兩種：急性中毒有腹痛、腹瀉、血尿等症狀；慢性中毒主要表現為口腔發炎、肌肉震顫和精神失常等。水銀是一種可以在生物體內積累的毒物，它很容易被皮膚以及呼吸和消化道吸收。口服、吸入或接觸後可以導致腦和肝的損傷。水銀破壞中樞神經組織，對口、粘膜和牙齒有不利影響。長時間暴露在高汞環境中可以導致腦損傷和死亡。

對於懷孕或哺乳的婦女來說，就更加嚴重。母乳可能被污染，而且在子宮內接觸汞會導致嬰兒神經管缺陷的風險增加。



Lead , Pb

鉛

High concentrations of lead in the body can cause death or permanent damage to the central nervous system, the brain, and kidneys. This damage commonly results in behavior and learning problems (such as hyperactivity), memory and concentration problems, high blood pressure, hearing problems, headaches, slowed growth, reproductive problems in men and women, digestive problems, muscle and joint pain.

Young children, infants, and fetuses are particularly vulnerable to the toxic effects of lead and will affecting the development of the brain and nervous system, learning disabilities, shorter stature, impaired hearing, and impaired formation and function of blood cells.

如果人体长期受到铅污染的危害，铅会阻碍血液的合成，导致人体贫血，出现头痛、眩晕、乏力、困倦、便秘和肢体酸痛等；还会四肢神经损伤、骨骼与肌肉组织发充不正常、男性精子数量减少血铅含量高还可导致高血压、骨质疏松等症。

铅有毒，尤其破坏儿童的神经系统，可导致血液病和脑病。兒童體內鉛過多會降低學習能力、記憶力、對神經傳導以及維他命的代謝產生負面影響。



Chromium, Cr

铬

The two most common forms of chromium found in water are trivalent chromium (chromium-3) and hexavalent chromium (chromium-6). Chromium-6 has established that breathing the particles can cause lung cancer.

铬通常主要分为三价铬和六价铬。六价铬及其化合物对于人体的伤害包括损害皮肤，导致皮炎、咽炎等；损害呼吸道系统，引发肺炎、气管炎等疾病；损害消化系统，误食甚至长期接触铬酸盐，极易造成胃炎、胃溃疡和肠道溃疡。过量摄入六价铬，严重的还会导致肾功能衰竭甚至癌症。



Magnesium, Mag

镁

Magnesium is a mineral that is important for normal bone structure in the body and brain. Magnesium is a cofactor in more than 300 enzyme systems that regulate diverse biochemical reactions in the body, including protein synthesis, muscle and nerve function, blood glucose control, and blood pressure regulation. Magnesium is required for energy production, oxidative phosphorylation, and glycolysis. It contributes to the structural development of bone and is required for the synthesis of DNA, RNA, and the antioxidant glutathione. Magnesium also plays a role in the active transport of calcium and potassium ions across cell membranes, a process that is important to nerve impulse conduction, muscle contraction, and normal heart rhythm.

镁是一种矿物质，对身体和大脑的正常骨骼结构很重要。镁是300多种酶系统中的辅助因子，可调节体内多种生化反应，包括蛋白质合成，肌肉和神经功能、血糖控制和血压调节。镁是能量产生，氧化磷酸化和糖酵解所必需的。它有助于骨骼的结构发育，是DNA，RNA和抗氧化剂谷胱甘肽合成所必需的。镁还在钙和钾离子跨细胞膜的主动运输中起作用，这一过程对神经冲动传导，肌肉收缩和正常心律起重要作用。



Calcium, Ca

钙

Calcium is a mineral that is necessary for life. In addition to building bones and keeping them healthy, calcium helps our blood clot, nerves send messages and muscles contract. About 99 percent of the calcium in our bodies is in our bones and teeth.

钙是人体所不可或缺的营养素之一，从骨骼形成、肌肉收缩、心脏跳动、神经以及大脑的思维活动、直至人体的生长发育、消除疲劳、健脑益智和延缓衰老等等。钙能增强人的耐力，使人精力充沛，心理稳定。体内钙充足，才能有效预防脑溢血、癌症和心脏病的发生，有利于健康长寿。



**pH value,
21.5°C**

pH

pH stands for power of hydrogen, which is a measurement of the hydrogen ion concentration in the body. The total pH scale ranges from 1 to 14, with 7 considered to be neutral. A pH less than 7 is said to be acidic and solutions with a pH greater than 7 are basic.

pH代表氢的功率，氢是体内氢离子浓度的量度。总pH值范围为1至14，其中7被认为是中性的。据说pH小于7是酸性的，pH大于7的溶液是碱性的。

How Does an Alkaline Water Filter Work?

碱性滤水器如何运作？



- Alkaline water is produced through mineral stones inside filters. Similar concept of spring water flows over porous rocks, it can pick up a range of organic alkaline minerals that affect its pH level from range pH 7-9.

碱性水是通过过滤器内的矿物石产生的。类似于泉水流过多孔岩石的概念，它可以吸收一系列影响其 pH 值的有机碱性矿物质，其 pH 值范围为 7-9。

Polypropylene spray melting fiber

聚丙烯喷熔纤维

- Use of a high-quality polypropylene as the raw material, after heating and melting, spinning, traction and other processing method produced by the tubular PP cotton filter. Its shell is selected a food grade ABS plastic and ultrasonic welding process production.

采用优质聚丙烯为原料，经加热熔融，纺丝，牵引等加工方法制成的管状PP棉滤芯。它的外壳被选作食品级ABS塑料和超声波焊接工艺生产

- For the initial filtration of raw water is a general usage from the beginning of filtration. It is blocking the rusty water, sediment, eggs, colloidal, suspended substances and large particles of impurities. It is for a very good initial function for the future filter protection.

从过滤开始就一般使用原水的初始过滤。它阻止了生锈的水，沉积物，鸡蛋，胶体，悬浮物和大颗粒杂质。它具有很好的初始功能，可用于将来的过滤器保护。

NIGHT STARS

PP

POLYPROPYLENE SPRAY MELTING FIBER FILTER

Material : Use of a high quality polypropylene as the raw material, after heating and melting, spinning, traction and other processing method produced by the tubular PP cotton filter. Its shell is selected a food grade ABS plastic and ultrasonic welding process production.

Function: For the initial filtration of raw water is a general usage from the beginning of filtration. It is blocking the rusty water, sediment, eggs, colloidal, suspended substances and large particles of impurities. It is for a very good initial function for the future filter protection.

Applicable water quality: Municipal tap water (GB5749)

Use temperature: 5-45 degrees Celsius

Applicable pressure range: 0.1-0.4Mpa

Recommended replacement period: 12 months

This product's purified water producing is depends on the local water quality vary different.

Precautions:

- 1.The product must be installed by professionals, users do not install by themselves
- 2.Before installing this product, please make sure the water valve has closed.
- 3.Pay attention to the installation of the filter is in a correct direction.
- 4.This product should be replaced regularly to ensure water quality and safety.



Coconut Carbon Fiber

椰壳碳纤维

- Use of high grade coconut fiber to form a net structure in the cylinder, surrounded by food grade plastic shell.

高等级椰子纤维被用于在筒体内形成网状结构，外部由食品级塑料壳包裹。

- Further reduce rusty water, sediment, eggs, colloidal, suspended substances and large particles of impurities, meanwhile absorb 99.9 percent of bacterial and virus as well as the bad taste of the water.

进一步减少铁锈水、沉淀物、虫卵、胶体、悬浮物质和大颗粒杂质，同时吸附99.9%的细菌和病毒，并去除水中的异味。

NIGHT STARS

UDF

COCONUT CARBON FIBER FILTER

Material : Using of high grade coconut fiber to form a net structure in the cylinder, surrounded by food grade plastic shell.

Function : further reduce rusty water, sediment, eggs, colloidal, suspended substances and large particles of impurities, meanwhile absorb 99.9 percent of bacterial and virus as well as the bad taste of the water.

Applicable water quality: Municipal tap water (GB5749)

Use temperature: 5-45 degrees Celsius

Applicable pressure range:0.1-0.4Mpa

Recommended replacement period:12 months

This product's purified water producing is depends on the local water quality vary different.

Precautions:

- 1.The product must be installed by professionals, users do not install by themselves
- 2.Before installing this product, please make sure the water valve has closed.
- 3.Pay attention to the installation of the filter is in a correct direction.
- 4.This product should be replaced regularly to ensure water quality and safety.



Mineral Fiber 矿物纤维

- Mineral filters typically add essential minerals like calcium and magnesium to water. These minerals not only enhance the water's taste but also contribute to its overall quality. Calcium and magnesium are known as "hard" minerals and can improve water's alkalinity and provide potential healthy benefits.

矿物滤芯通常会向水中添加钙、镁等必需矿物质。这些矿物质不仅能提升水的口感，还能提高其整体质量。钙和镁被称为“硬”矿物质，可以提高水的碱性，并带来潜在的健康益处。

- Adding mineral taste to the water make it naturally mineralised, overall improve the quality and the taste of the water.

向水中添加矿物质使其自然矿化，整体提升水的质量和口感。

NIGHT STARS

MMF

MINERAL FILTER

Material: Mineral filters typically add essential minerals like calcium and magnesium to water. These minerals not only enhance the water's taste but also contribute to its overall quality. Calcium and magnesium are known as "hard" minerals and can improve water's alkalinity and provide potential health benefits.

Function: adding mineral taste to the water make it naturally mineralised, overall improve the quality and the taste of the water.

Applicable water quality: Municipal tap water (GB5749)

Use temperature: 5-45 degrees Celsius

Applicable pressure range: 0.1-0.4Mpa

Recommended replacement period: 12 months

This product's purified water producing is depends on the local water quality vary different.

Precautions:

- 1.The product must be installed by professionals, users do not install by themselves
- 2.Before installing this product, please make sure the water valve has closed.
- 3.Pay attention to the installation of the filter is in a correct direction.
- 4.This product should be replaced regularly to ensure water quality and safety.



Post Activated Carbon

后活性炭

- Use of imported activated carbon as raw material activated carbon high iodine value; The outer shell is selected with a food-grade ABS plastic and by using an ultrasonic welding process production.

(使用进口活性炭为原料的碘值高的活性炭; 外壳选用食品级ABS塑料并通过超声波焊接工艺生产。)

- Further absorption of water abnormal color or odor, such as chlorine(bleaching powder), inhibition of bacterial regeneration, further to improve the water taste, to make the water quality sweet and delicious.

(进一步吸收水的异常颜色或气味, 例如氯(漂白粉), 抑制细菌再生, 进一步改善水的味道, 使水质香甜可口。)

NIGHT STARS

T33

POST ACTIVATED CARBON FILTER

Material: The use of imported activate carbon as raw material, activated carbon high iodine value; the outer shell is selected with a food grade ABS plastic and by using an ultrasonic welding process production.

Function: Further adsorption of water abnormal color or odor, such as chlorine (bleaching powder), inhibition of bacterial regeneration, further to improve the water taste, to make the water quality sweet and delicious.

Applicable water quality: Municipal tap water (GB5749)

Use temperature: 5-45 degrees Celsius

Applicable pressure range: 0.1-0.4Mpa

Recommended replacement period: 12 months

This product's purified water producing is depends on the local water quality vary different.

Precautions:

- 1.The product must be installed by professionals, users do not install by themselves
- 2.Before installing this product, please make sure the water valve has closed.
- 3.Pay attention to the installation of the filter is in a correct direction.
- 4.This product should be replaced regularly to ensure water quality and safety.

