

KEEP THIS MANUAL IN GOOD CONDITION, PLEASE
READ THIS MANUAL CAREFULLY BEFORE USING
THE MACHINE

WATER PURIFIER

User Manual

Model: NB22-3001C

1. PRECAUTION

1-1 Safety Issues

Please note the following brief icons and rules for safe use of this product



Troubleshooting

When the machine fails, please disconnect the power and water source immediately



Maintenance

Never remove the parts on the machine to avoid leakage or damage



Avoid contact with children

Never have the machine operated by a child



Temperature

Please use the product in a dry place with the temperature of 4-43°C



Electricity prevention

To avoid leakage of electricity.



Accessories and filters

To maintain the normal operation of the machine, be sure to use accessories and filters supplied by original company



Emergency call

For any help, please call the local sale service center or the national service hotline



Correct repair service

This machine can only be repaired by qualified personnel designated by this company



Avoid direct sunshine

Do not install the machine in a place exposed to direct sunshine



Anti-freeze

Never store or expose the product in an environment less than 0°C

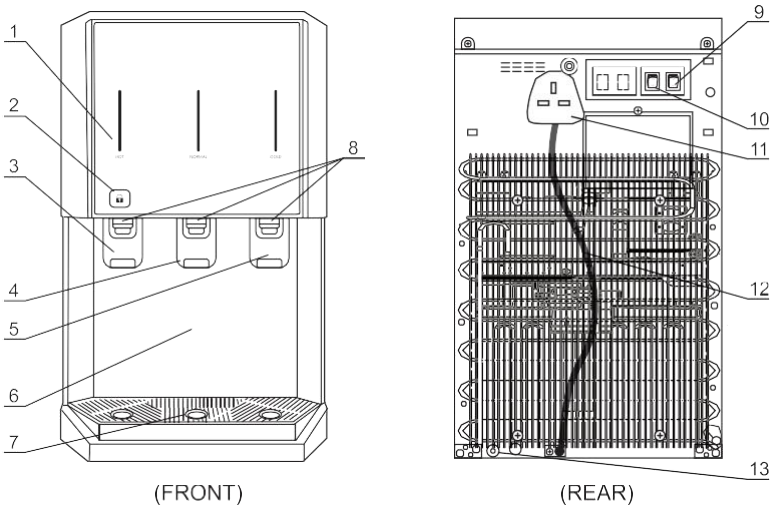
1. This appliance is not intended for use by persons (including children) with reduced physical, sensory or mental capabilities, or lack of experience and knowledge, unless they have been given supervision or instruction concerning use of the appliance by a person responsible for their safety.
2. Children should be supervised to ensure that they do not play with the appliance.
3. If the supply cord is damaged, it must be replaced by the manufacturer, its service agent or similarly qualified persons in order to avoid a hazard.
4. Do not store explosive substances such as aerosol cans with a flammable propellant in this appliance.
5. This appliance is intended to be used in household and similar applications such as staff kitchen areas in shops, offices and other working environments; farm houses and by clients in hotels, motels and other residential type environments; bed and breakfast type environments; catering and similar non-retail applications.
6. The appliance is suitable for indoor use only.
7. WARNING: Keep ventilation openings, in the appliance enclosure or in the built-in structure, clear of obstruction.
8. WARNING: Do not use mechanical devices or other means to accelerate the defrosting process, other than those recommended by the manufacturer.
9. The appliance must not be immersed.
10. WARNING: To avoid a hazard due to instability of the appliance, it must be fixed in accordance with the instructions.
11. The appliance must not be cleaned by a water jet.
12. The appliance must not be immersed.

1-2 packing list

Packing box	1/4" PE pipe(5m)
Materials bag	User's Manual(1 copy)
Materials bag	1/4" RO Join (1pc). 1/4" Ball Value (1pc)
Filter	10" Inline Sediment, Pre Carbon, Silver Carbon, Post Carbon. (4 ways Filtration)

2. YOUR WATER PURIFIER

2-1 Part Name of Water Purifier



NO.	PART NAME	NO.	PART NAME
1	Panel	8	Hygiene Guard
2	Child safety button	9	Heating switch
3	Push tap of hot water	10	Cooling switch
4	Push tap of normal water	11	Power supply cord plug
5	Push tap of cold water	12	Condenser
6	Front carapace	13	Water inlet
7	Water collector		

NOTE:

Please use the product in a place with temperature of 4-43°C and relative humidity less than 90%. TO enhance produce performance, product parts may be changed without notice.

2-2 Model and Major Parameters

Model	NB22-3001C
Rated power	220-240V~50-60Hz
Heating power	420W
Cooling current	100W
Rated pure water flow	1.2L/min(0.3MPa)
Hot water capacity	1.2L
Cold water capacity	2L/H
Applicable environment	10-40°C humidity ≤90%
Applicable water pressure	0.1-0.4MPa
Applicable water	City Water
Stage 1	Sediment filter (1pc)
Stage 2	Pre Carbon filter (1pc)
Stage 3	Silver Carbon filter (1pc)
Stage 4	Post Carbon filter (1pc)
Product size	300(W)x438(D)x537(H)mm
Packing size	336(W)x487(D)x640(H)mm

2-3 Product Features

1. Fresh pure water: four stage high-precision filtration to ensure effluent water quality.
2. Compressor for cooling: adopt stable, high-efficiency and low noise compressor.
3. Quadruple anti-dry burning protection: filtered water was provided to hot tank in priority, water level control system identifies the water level automatically, double protection of thermostat, quadruple anti-dry burning protection system.
4. Quadruple anti-dry burning protection: filtered water was provided to hot tank in priority, water level control system identifies the water level automatically, double protection of thermostat, quadruple anti-dry burning protection system.
5. Quick connect fitting technology: adopt Korean quick connect fitting technology which has outstanding sealing and no water leakage.

2-4 Product Functions

●High-precision filtration, pure water quality

Through high-precision four stage filtration system, it filters granules, iron rust, colloids bacteria, residential chlorine and impurities in water.

●Satisfy demand of drinking water and kitchen water

It can make water in 24 hours continuously according to needs. Ample water satisfies demand of drinking water and kitchen water.

●Keep fresh pure water

It is connected to tap water directly, can make water continuously and keep dissolved oxygen in water, ensuring fresh pure water for drinking and kitchen use.

●Humanized safety protection

A series of humanized designs guarantee safety of water consumption completely, like lighting device, childproof faucet and quadruple anti-dry burning protection.

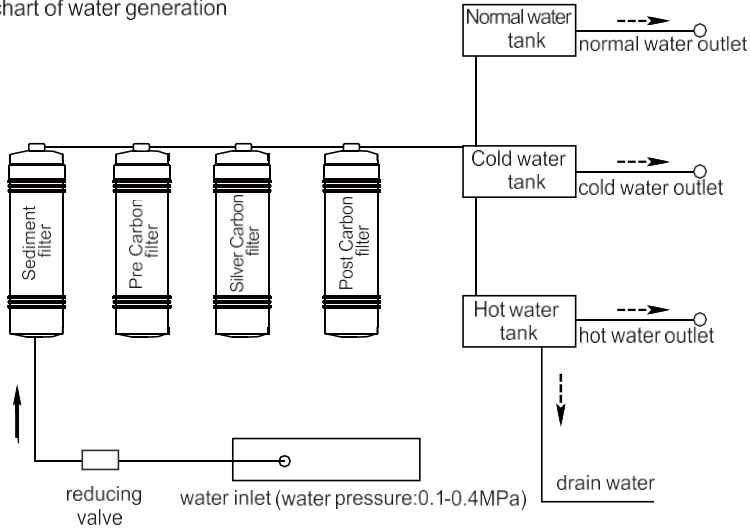
●Install the hydraulic pressure

Applicable water pressure: 0.1-0.4Mpa

Guidelines for ensuring protection of the water cooler by means of a ground- fault circuit interrupter.

2-5 Working principle

1. Flowchart of water generation



3. Filter Function Introduction

Stage	Filter	Function
Stage 1	Sediment filter	Effectively remove dust and rust, remains of which particles are relatively big, prevent various impurities from entering other filter in order to increase the filter performance and lifespan.
Stage 2	Pre Carbon filter	The Pre-carbon filter uses granular activated carbon to purify the water by absorbing organic substance such as chlorine, heavy metal and odor.
Stage 3	Silver Carbon filter	This silver activated carbon filter inhibits the growth of bacteria within the filter media bed. The addition of silver in the GAC of this filter has brilliant performance of Anti-bacteria.
Stage 4	Post Carbon filter	The Post carbon filter get rid of chlorine, trihalomethanes (THM), herbicides, color, odor, bleaching agents and other organic chemicals.

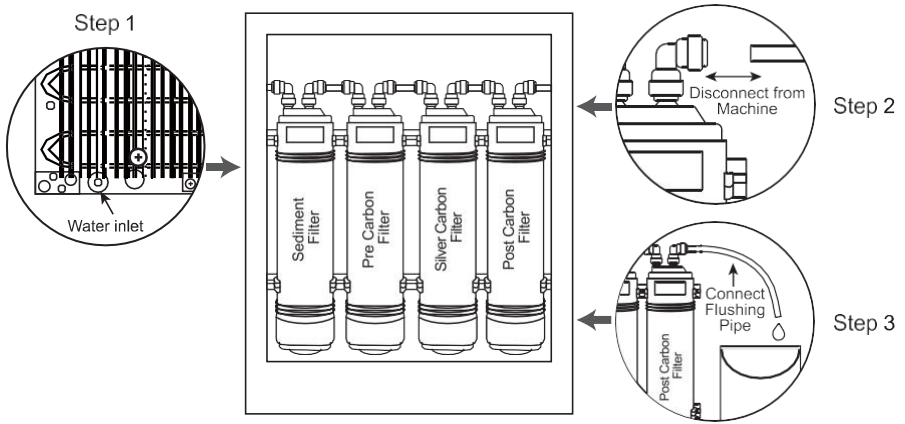
3. Use Guide and Maintenance

WARNING: Please cut off water source before replacing filters. Never plug filters in water running state.

3.1 Guidance on Unpacking and Installation

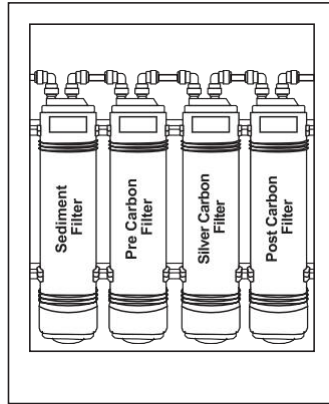
1. Open the top of the packing case, take out the top foam and its accessories.
2. Put the accessories aside.
3. Unpack the product, install the water collector.
4. Take out the quick joint, and install it on the water pipe.

5. Connect tap water into water inflow, and open the water tap to flush the filter till it doesn't discharge black water, for about 10min; Take the same step to flush the Post carbon filter.



6. Install the clean filter in the product, the installation order is:

Sediment filter → Pre Carbon filter → Silver Carbon filter → Post Carbon filter



7. Insert the water inlet PE pipe in the quick joint.
 8. After installing, supply power, and use it normally.
 9. When installing filter and replace filter please turn off the water and power supply before installation and replacement.

Activate Heating & Cooling

To activate, push top side of power switches in to start heating and cooling water.

3-2 The display panel is shown as below:

From the left to right: Heating, Normal, Cooling.

1. Requirements on Functions

1.1. Heating Icon

The heating icon lights on when heating, and it lights off after heating or don't heating.

1.2. Cooling Icon

The cooling icon lights on when cooling, and it lights off after cooling or don't cooling.

1.3. Normal Icon

The normal icon always lights on when water process or done process.

3-3. Filter Replacement Cycle

Sediment filter	Pre Carbon filter	Silver Carbon filter	Post Carbon filter
(approximately 6 months)	(approximately 6 months)	(approximately 12 months)	(approximately 12 months)

Special hints:

The data above are for references only. It is based on 10L per daily drinking water.

The specific cycle for replacement of filters varies with local water quality and water amount consumed.

3-4. Maintenance

1. Keep this machine in a dry and cool place and avoid direct sunshine. Rearward of the machine shall be at least 20cm away from the wall. Never put the machine on paper or foam, which may store water and then cause creepage. Never put anything flammable beside this machine. Do not use the machine outdoors or in a place that can be splashed by water.
2. For the water purifier, the installation and replacement of filters must be carried out by qualified personnel.
3. In case the machine is not in use for a long time, turn off the heating switch or the refrigerating switch to save power.
4. In case the machine is not needed for a long time, please take off the plug, turn off the copper chromeplated ball valve and drain off the remaining water through the outlet.
5. In case the water supply is cut off, please close the feed water ball valve and cut off the power. After water re-supply, please open the other faucets to discharge sediment and then turn on the feed water ball valve.
6. The machine must use an earthed three-pin socket and a reliable creepage protection switch.
7. Never use organic solvents such as gasoline to clean the machine; strictly prohibit washing the machine with water or splashing water to the machine.
8. Never turn on (off) the machine by inserting the plug into (pulling the plug out from) the socket. Never increase the length of the supply cord to avoid fire.
9. If the supply cord is damaged, it must be replaced by the manufacturer or qualified person so as to avoid a hazard.
10. The water source for the water purifier is civil tap water.
11. Never dismantle spare parts of the machine to avoid water leakage or damage.
12. Never turn the machine upside down or lean it more than 45° when moving it so as to avoid any damage to it or any accident.

3-5. Troubleshooting

In case of failure, please carry out inspection according to the requirements below. If unresolved, please contact the local service agency.

Failure	Cause	Solution
Small water flow	Low water pressure	Check the booster pump or water inlet
	Filter not replaced in time, beyond the use time	Please contact the local service agency to replace the filter
Unsuitable water temperature	Over consumption of water in a short time	Just wait a moment, and water is available again
	Power supply not put through	Switch on power supply
Water leakage	Pipe not connected properly	Inspect the connector to connect the pipe properly
	Water pipe and PE pipe bursting	Replace the water pipe and PE pipe

It is a normal state that the following circumstances occur when the water purifier is used.

1. During the heating, the heating tube may generate slight noises. This is a normal state.
2. When the heating tank is being heated without water, the anti dry-burning device will disconnect automatically and can not reset by its own. The reset must be completed by a professional technician. The design is in accordance with the national safety requirements.
3. When an ambient temperature is higher, the cooling capacity may be slower, which is a normal state.

The packaging material used is recyclable; we recommend that you separate plastic, paper and cardboard and give them to recycling companies. To help preserve the environment, the refrigerant used in this product is R134a (Hydrofluorocarbon -HFC), which does not affect the ozone layer and has little impact on the greenhouse effect. According to WEEE (Waste of Electrical and Electronic Equipment) guidelines, waste from electrical and electronic devices should be collected separately. If you need to dispose of this appliance in the future, do NOT throw it away with the rest of your domestic garbage. Instead, please take the appliance to the nearest WEEE collection point, where available.



The product is subject to change without notice.
Please keep this manual properly.